



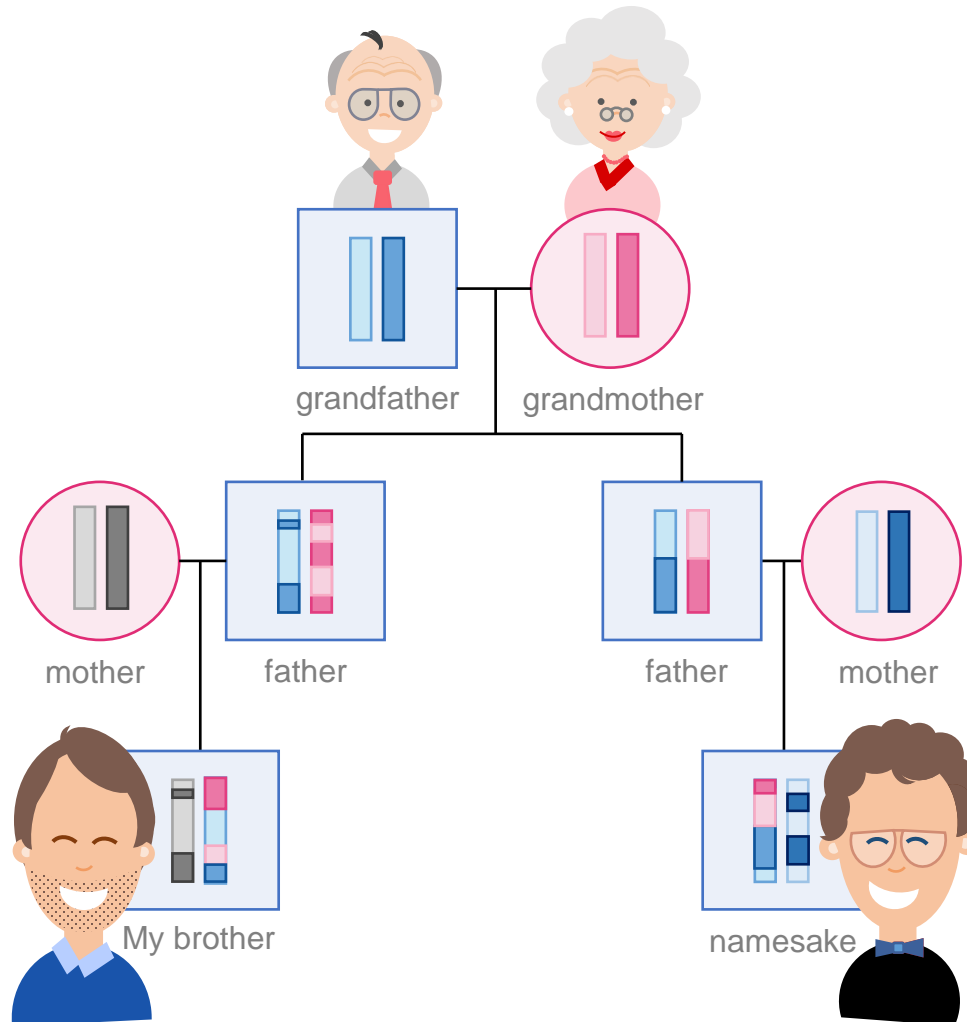
To connect the
PRESENT with
the **PAST** The genetics behind
our ancestry revealed by
the human Y-chromosome



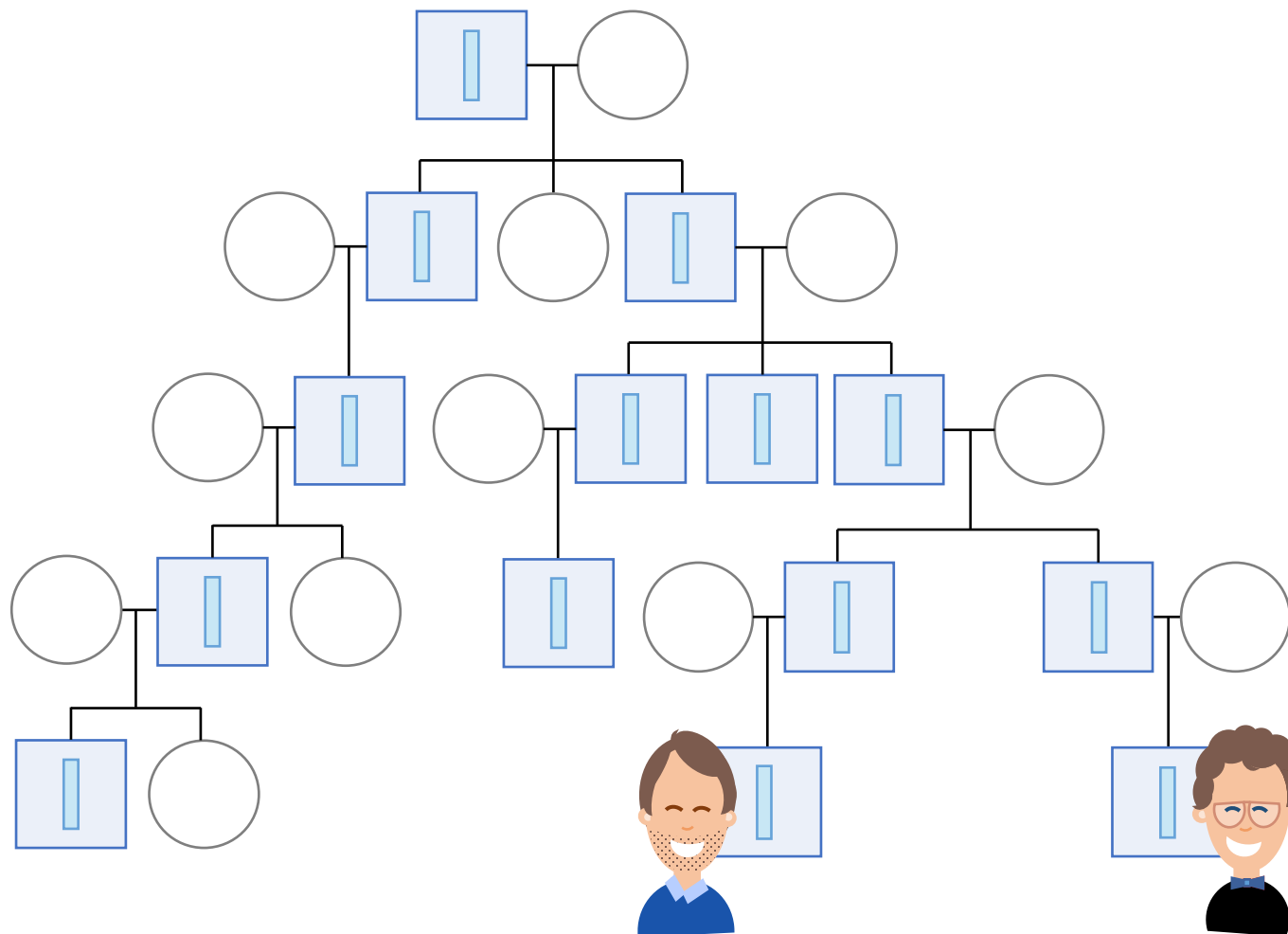
-  Postdoctoral researcher
-  KU Leuven, België
-  sofie.claerhout@kuleuven.be

Imagine ...

Is he related or not?



Why?

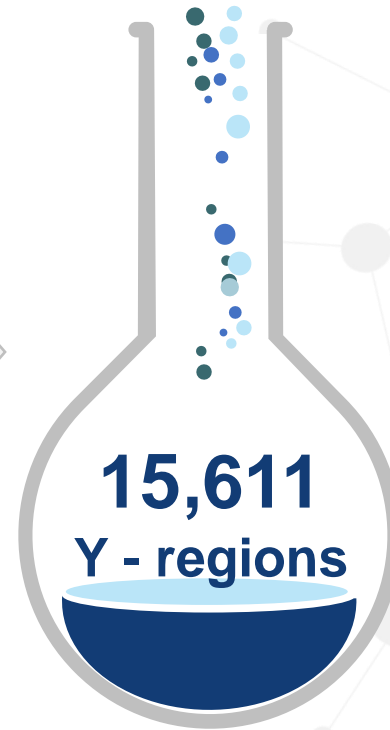


Why?

COR*
database



CSY_{SEQ}



Why?



Historical Demography



Prof. Jan Van Bavel
(Sociology, KUL)



Prof. Paul Puschmann
(Demography, URadboud)



Evolutionary Biology



Prof. Ellen Decaestecker
(Evolutionary Biology, KULAK)



Prof. Guy Baele
(Phylogenetics, KUL)



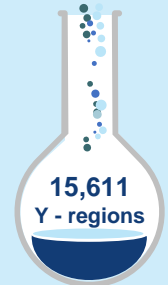
Forensic Genetics



Prof. Ronny Decorte
(Forensic Genetics, KUL)



Prof. Peter de Knijff
(Human Genetics, LUMC)



CSY_{SEQ}



COR*
database



Surname founders

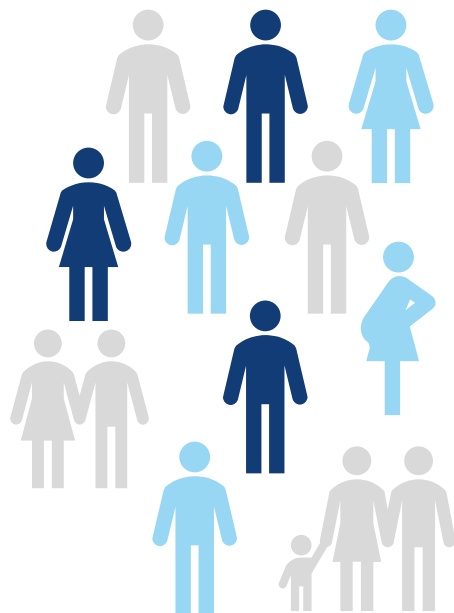
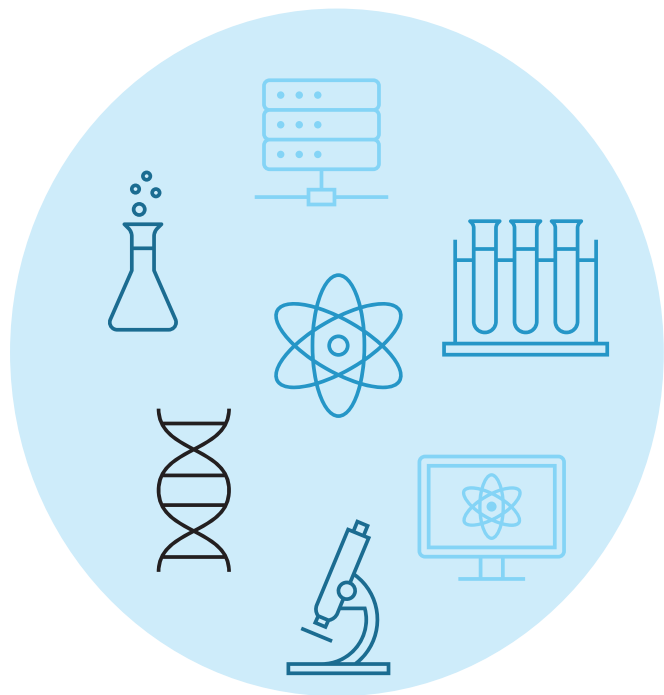


ChrY dominance



ChrY diversity

Why?



THANK YOU



✉ sofie.claerhout@kuleuven.be

Let's connect !



Centre for Sociological Research (KU Leuven)

Prof. dr. Jan Van Bavel

Prof. dr. Koen Matthys

Historical demography and Family History (Radboud University)

Prof. dr. Paul Puschmann

Laboratory of forensic genetics (KU Leuven)

Prof. dr. Ronny Decorte

Interdisciplinary Research Facility Life Sciences (KULAK)

Prof. dr. Ellen Decaestecker



KU LEUVEN

KU LEUVEN kulak

